

NATIONAL BROKERS LIMITED

<http://nationalbrokersbd.com/>

Tea Auctioneers since 1948

TEA MARKET REPORT – Sale 27 held on Monday 7th November, 2022

CTC LEAF: 57,337 packages of Current Season teas on offer met with a fairly good demand.

BROKENS: A handful of well made clean Brokens on offer met with a strong demand and were generally firm but their Mediums met with fair enquiry and tended easier whilst Plain varieties witnessed less demand and were easier with quite a lot of withdrawals. BLF teas met with only a little enquiry and withdrawals were heavy in this category.

FANNINGS: A small weight of good liquoring Fannings met with a strong demand and tended dearer. Other varieties mostly declined in value in line with quality. BLF teas continued to meet with less demand and were easier with heavy withdrawals.

CTC DUST: 13,016 packages of Current Season teas on offer met with good demand. Good liquoring Dusts

met with good competition and sold well at dearer rates. Their Mediums were fully firm on last. However, Plain and BLF teas were an easier market and saw heavy withdrawals. Blenders lent strong support with fair interest from the Loose tea buyers.

COMMENTS: Buyers were more selective in their buying this week, generally ignoring Plain and BLF varieties. Well made clean liquoring sorts continued to receive good support and were firm to dearer over last. Blenders were the mainstay of the market with Loose tea buyers operating selectively.

Dusts were a dearer market.

Our catalogue: (Sale 27) Avg: Tk 218.12, Sold 72.0% & (Sale 26) Avg: Tk 218.17, sold 72.7%.

Quotations – This Week – (In Taka)

Brokens	This Week	Last Week	Fannings	This week	Last Week	Dust	This week	Last Week
Large	NQTA	205-210 nom	Best	235-250	235-245 nom	PD	213-279	181-318
Medium	205-215	205-215	Good	215-225	215-225	RD	140-412	185-394
Small	210-225	210-220	Medium	205-210	205-210	D	180-390	190-390
Plain	175-185	175-185	Plain	175-185	175-185	CD	166-405	192-310
BLF	125-155	125-155	BLF	125-155	125-155	BLF	140-167	165-209

Exchange Rates 7th November, 2022 Sterling Pound: Tk. 113.3650 dollar: Tk. 100.0000

Top Prices – This Week

Category – CTC	Garden	Grade	Package	Price	Buyer(s)
Brokens	* Madhupur	GBOP(S)	20	365/-	AKT
Fannings	* Madhupur	PF	20	355/-	AKT/Ispahani
Clonal Brokens	* Madhupur	GBOP(BT1)	20	405/-	AKT
Clonal Fannings	* Madhupur	PF(BT1)	30	400/-	Ispahani/Meghna
PD/RD (Incl Clone)	* Madhupur	RD(BT1)	10	412/-	AKT
D (Incl Clone)	* Madhupur	D(BT1)	20	390/-	Meghna /AKT
CD (Incl Clone)	* Madhupur	CD(BT1)	10	405/-	BTS

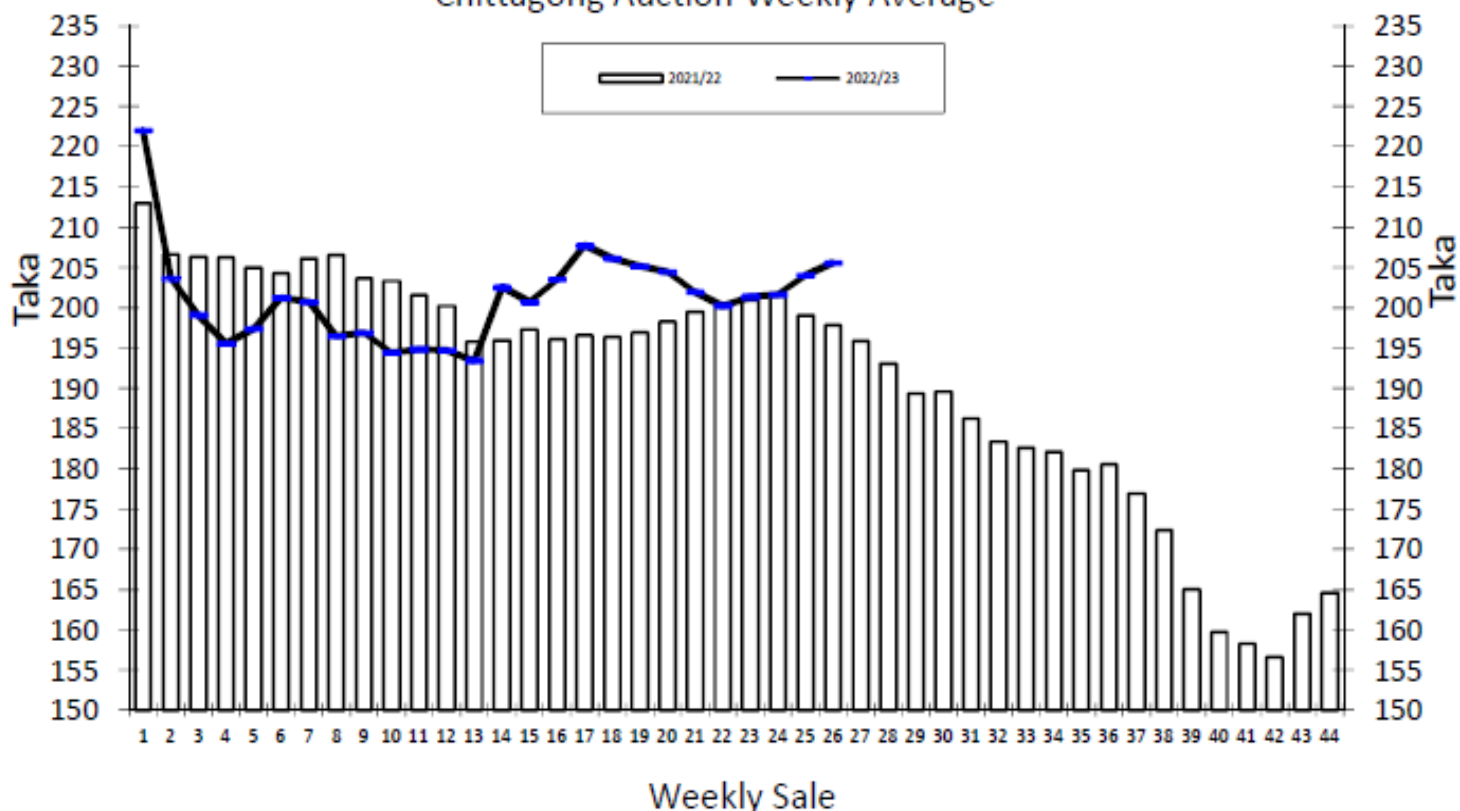
* Above price(s) realised in our catalogue

Offerings

Type	This Sale (Sale 27)				Next Sale (Sale 28)			
	Season 2022-23		Season 2021-22		Season 2022-23		Season 2021-22	
	Packages	Qty/Kg	Packages	Qty/Kg	Packages	Qty/Kg	Packages	Qty/Kg
Leaf	57,337	2,861,116	51,822	2,840,882	61,518	3,069,748	52,062	2,854,039
Dust	12,629	630,187	11,299	611,205	12,733	635,377	12,605	682,599
Total	69,966	3,491,303	63,121	3,452,087	74,251	3,705,125	64,667	3,536,638

Chittagong Auction Average: Sale 26
Season 2022/23: Tk. 205.59 & Season 2021/22: Tk. 197.80

Chittagong Auction Weekly Average



Quantities of Teas Sold & Average Prices Realised

Category	For the Sale				Up-to-Date Sale							
	Season 2021/22		Season 2022/23		Season 2021/22		Season 2022/23		Season 2022/23		(+/-) Season 2021/22	
	Qty. (Kg)	Taka	Qty. (Kg)	Taka	Qty. (Kg)	(%)	Taka	Qty. (Kg)	(%)	Taka	Qty. (Kg)	Taka
CTC LEAF	1,772,151.5	194.65	1,871,886.2	200.89	41,850,857.2	78.0%	196.98	38,932,543.0	78.7%	195.19	-2,918,314.2	-1.79
CTC DUST	456,487.5	210.03	491,123.8	223.51	11,526,662.0	21.5%	212.60	10,467,538.5	21.2%	221.29	-1,059,123.5	8.69
Sub-Total	2,228,639.0	197.80	2,363,010.0	205.59	53,377,519.2	99.5%	200.35	49,400,081.5	99.9%	200.72	-3,977,437.7	0.37
Orthodox	0.0	0.00	0.0	0.00	26,035.0	0.0%	101.48	0.0	0.0%	0.00	-26,035.0	-101.48
Total	2,228,639.0	197.80	2,363,010.0	205.59	53,403,554.2	99.5%	200.30	49,400,081.5	99.9%	200.72	-4,003,472.7	0.42
Green Tea	63.0	1,460.32	33.0	1,539.39	10,385.4	0.0%	462.79	2,469.5	0.0%	454.15	-7,915.9	-8.63
Yellow Tea	0.0	0.00	0.0	0.00	20.0	0.0%	1,400.00	0.0	0.0%	0.00	-20.0	-1,400.00
Total	2,228,702.0	197.84	2,363,043.0	205.61	53,413,959.6	99.5%	200.35	49,402,551.0	99.9%	200.73	-4,011,408.6	0.38
Other (s)	547.6	130.00	13,935.4	146.81	250,346.2	0.5%	163.83	43,126.3	0.1%	129.18	-207,219.9	-34.65
G.Total	2,229,249.6	197.82	2,376,978.4	205.27	53,664,305.8	100.0%	200.18	49,445,677.3	100%	200.67	-4,218,628.5	0.49

Buyer Purchase Analysis

Buyer	For the Sale				Up-to-Date Sale							
	Season 2021/22		Season 2022/23		Season 2021/22		Season 2022/23		Season 2022/23		(+/-) Season 2021/22	
	Qty. (Kg)	Taka	Qty. (Kg)	Taka	Qty. (Kg)	(%)	Taka	Qty. (Kg)	(%)	Taka	Qty. (Kg)	Taka
Export	2,197.6	215.25	998.5	221.00	24,143.6	0.04%	199.24	10,984.8	0.02%	208.76	-13,158.8	9.53
Internal	2,227,052.0	197.80	2,375,979.9	205.26	53,640,162.2	99.96%	200.18	49,434,692.5	99.98%	200.67	-4,205,469.7	0.48
Grand Total	2,229,249.6	197.82	2,376,978.4	205.27	53,664,305.8	100.00%	200.18	49,445,677.3	100.0%	200.67	-4,218,628.5	0.49

Crop of Major Tea Producing & Exporting Countries

Country	Month	2020	2021	2022	(+/-) 2021	2020	2021	2022	(+/-) 2021
Bangladesh *	September	12.14	12.61	14.74	2.13	57.45	64.76	63.83	-0.92
North India	September	163.9	142.6	166.7	24.1	698.7	781.5	808.9	27.4
South India	September	24.1	20.6	23.3	2.7	160.1	181.9	175.8	-6.1
All India	September	188.0	163.2	190.0	26.8	858.8	963.4	984.7	21.3
Sri Lanka	August	22.4	23.8	18.2	-5.6	179.4	211.9	171.3	-40.6
Kenya	July	36.5	34.7	33.9	-0.9	377.0	308.8	304.2	-4.6

* Source: Bangladesh Tea Board's Monthly Statistical Bulletin

General + Other Market(s) This/Last Week

KOLKATA SALE 44- 2nd 3rd NOVEMBER, 2022

CTC: There was lower demand compared to the previous week. Good liquoring Assams were irregularly easier closely following quality. Cleaner, well-made medium Assams sold at irregular levels around last whereas the remainder was easier. Better Doors were steady and sold around last levels. Plainer Doors were steady. Exporters showed limited interest on larger Brokens. Local buyers operated on the Doors & other clean, well-made descriptions.

Tea Category	Brokens	Fannings	Dusts
BEST ASSAMS	389-438	377-414	389-426
GOOD ASSAMS	329-377	316-365	329-377
MED ASSAMS	207-280	195-268	207-280
BEST DOORS	304-316	304-316	NA
GOOD DOORS	256-292	256-292	NA
MED/PLN DOORS	146-219	146-207	146-170

COONOOR SALE 44- 4th NOVEMBER, 2022

DEMAND: Good demand. MARKET: The total CTC leaf teas sold this week was 89.16 % (953388.59kgs) of the total offering of 1069296.27Kgs.

CTC Leaf(USC/KG)	Best	Good	Better Medium	Medium	Plain
Larger Brokens	172-183	138-167	135-136	120-134	110-119
Medium Brokens	173-218	151-172	142-150	125-141	112-124
Smaller Brokens	172-228	152-167	141-150	129-140	122-128
Fannings	168-211	153-167	141-152	131-140	117-130

SILIGURI SALE 44- 3rd NOVEMBER, 2022

Good demand which eased with the progress of the sale. Best/good sorts were around last. Remainder were irregular & tended easier in line with quality with some withdrawals. DUST- Good demand at last levels. Buying Pattern: Internal- Main stay. Blenders – Useful support.

Quotations (USC/KG)	Brokens(USC/kg)	Fannings(USC/kg)	Dust (USC/kg)
GOOD / BEST	280-414	280-402	256-341
MEDIUM/ BETTER MEDIUM	195-268	195-268	183-243
COMMON / BLF	134-183	146-183	152-170

MOMBASA SALE 44 – 1st & 2nd NOVEMBER, 2022

There was good demand but at irregular levels with prices following quality for the 197,500 packages (13,241,949.00 kilos) available; 27.14% remained unsold.

CTC QUOTATIONS	BP1 – USC	PF1 – USC	PD – USC	D1 - USC
Best	280 – 454	309 – 336	284 – 349	378 – 392
Good	260 – 350	310 – 320	282 – 312	370 – 394
Good Medium	255 – 307	300 – 316	283 – 298	370 – 389
Medium (KTDA)	250 – 282	244 – 288	258 – 275	245 – 331
Medium (Plantations)	228 – 276	216 – 248	214 – 239	222 – 300
Lower Medium	140 – 254	157 – 232	150 – 224	160 – 226
Plainer	112 – 184	131 – 220	132 – 206	146 – 206